



Everyday Math Online Basics

2013-14

Logging Everyday Math Online:

1. Go to <http://everydaymathonline.com>
2. Login (your email address is your login) or get the login reminder

Set up your EPlanner:

1. Click on the EPLANNER icon on the left
2. Delete last year's plan by finding the lesson planner and choosing delete
3. Click on SET UP LESSON PLAN on the left
4. Use the drop down to select CREATE A NEW LESSON PLAN
5. Select grade level
6. Under LESSON PLAN NAME + School year
7. For the START DATE, enter the first day you plan to teach the first MATH lesson in your classroom
8. Click CREATE PLANNER
9. Use your district calendar to set up your school year by clicking on dates and choosing the type of day (September 2, click holiday)
10. Click on GO TO EPLANNER

Accessing Teacher Resources (great for iPad):

1. Go to a date that has a lesson
2. Click on the Lesson Number
 - a. The Teacher Guide will be at the bottom under your calendar
 - b. The Lesson Opener is linked at the top of the Teacher Guide
 - c. The Lesson Pages are linked at the top of the Teacher Guide

The screenshot shows the Everyday Math Online interface. At the top, there's a navigation bar with 'EM Online Everyday Mathematics' and a '2013-14 702ND/1424 WINNER' badge. Below this is a 'Welcome, Ms. Husain' message and a row of icons for various resources like CCSS, NCTM, and EM Games. The main area is the 'ePlanner' for 'Husain 2013-14', showing a calendar for August and September. A callout bubble says 'Quick search for lessons'. On the right, the 'Teachers Lesson Guide' for 'Lesson 1.7' is displayed, with red circles highlighting the lesson number 'Lesson 1.7' and the 'Lesson Opener p 33' and 'Lesson Pages 34-37' links. Below the calendar, there are 'Move / Delete' buttons for each lesson date.

Modifying Calendar Dates:

1. Use the Move/Delete buttons to move lessons
2. Click on SET UP LESSON PLAN from the ePlanner and choose your Lesson Plan and enter dates
3. Click on the magnifying glass to search for lessons by number

Class Builder:

1. Click on CLASS BUILDER from the menu on the top
2. Choose ADD CLASS on the top right
3. On the bottom, choose SHOW and choose your grade level
4. Click on your student and use the arrow to move them over to the right
 - a. If the kid is greyed out, then they have already been added to another class
5. Click CLOSE on the top right

Student Passwords, Logins, and Class Login Cards:

1. Click on STUDENT PASSWORDS from the top menu
2. PRINT CLASS CARDS here
3. Click on the KEY to the left of student name to see a student view

Student	6	1	4	Reset
Bobcat, Bobby Grade Level: 2 Birthdate: Login: bobby@159				Edit

Support

1. Under the SUPPORT you will find the Parent Letter

Interactive Teacher's Lesson Guide (Doesn't work on the iPads):

1. Virtual TE that includes all the components in your kit
2. Sticky notes and highlighters can be used virtually



Algorithms

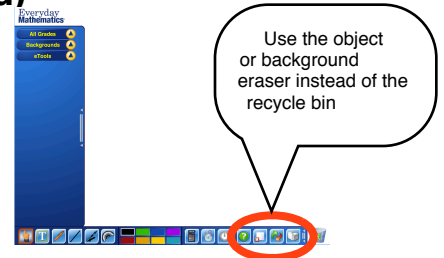
1. Library of Virtual Animations
 - a. great place to show or review how to solve problems
 - b. great to share with parents when teaching new concepts
 - c. kids have access to this on the bottom of their home page



eToolKit (GREAT on SMARTboard--Doesn't work on the iPad)

EM aligned virtual manipulatives

1. Leave all grade levels so you have access to more tools
2. Example:
 - a. Choose background-Place Value-100s,10s,1s
 - b. Choose eTools-Base 10 Blocks - Flat
 - c. Drag counters to grids
 - d. Click the hammer on the bottom left of block to break them apart
 - e. Use the CLEAR BACKGROUND or CLEAR OBJECTS tools instead of the RECYCLING



Virtual Learning Community

<http://vlc.cemseprojects.org/>

The Everyday Mathematics Virtual Learning Community (VLC) provides a space for teachers to view and share resources approved by EM but not created by EM. It's like a Pinterest site for EM lessons. You will find **RSA booklets** on this website.

1. Login (or Join)
2. Click on RESOURCES at the top



3. Under PEDAGOGICAL ISSUES choose ASSESSMENT
4. Choose your grade from the NARROW YOUR CHOICES menu on the left
 - a. **Find the RSA booklets**
 - i. RSA (recognizing student achievement) booklets will appear by unit (choose 3rd EDITION not CCSS EDITION)
 - ii. You can choose to DOWNLOAD to save or print these resources. *The full UNIT of RSAs will appear after you open or print the file
 - iii. or SAVE TO MYPAGE (like PINNING) and all saved pages will be located in the MYPAGE section
 - b. **Find the Mathematical Practice Labels**
 - i. From the RESOURCES PAGE, under TYPE OF RESOURCE, click INSTRUCTIONAL PLANNING TOOLS
 - ii. Check grade level
 - iii. Scroll and find your GRADE MATHEMATICAL PRACTICE LABELS and click on it

Assessment Differentiation System

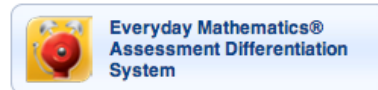
This system is a combination of Exam View and Running Records.

Data entered from your own teacher-created assessments, progress checks or recognizing student achievement (RSAs are from the VLC or starred in your TE) can be tracked (much like the checklist in the assessment handbook). The data you collect and input into this system will help you find differentiated resources tailored for each child based on data you input.

1. From the EM HOME page click on EM Assessment Differentiation System on the bottom right

2. Setup your Profile

- a. Click on MY PROFILE at the top right
- b. Change SCORING METHOD to DETAILED
- c. Standards=Grade Level Goals
- d. Time Zone=Central



* Assessments

****To use this section, you will need YOUR scored RSAs, Progress Check data or assessments you created**

- a. From inside the Assessment Differentiation System use the SECTION pull-down menu on the right to choose your class and choose Assessments.

Enter RSA, Progress Check (Unit Test), Teacher Created Assessment Data

1. Use the drop down menu on the left to pick a unit
2. Drag the ENTIRE Recognizing Student Achievement Checklist FOLDER to the yellow section
3. Score your students based on 1-4 corresponding to the RSA lesson number.
 - a. Hover over the lesson number to see the skill
 - b. Click inside the box to change the numbers, 1s and 2s will turn yellow to indicate an area for intervention
 - i. Great data for FIT or reteach groups in the classroom

Enter YOUR DATA for PROGRESS CHECKS (End of Unit Tests)

1. Use the drop down menu on the left to pick a unit
2. Drag the ENTIRE PROGRESS CHECK CHECKLIST folder into the yellow box
 - a. Select SCORE the assessment, click OK

b. For each child, enter the score for each question from your test, click OK

*** Run Reports and access Activities for Intervention**

1. All of your data from assessments (ie RSAs or Progress Checks) should be already enter before running reports
2. From inside the Assessment Differentiation System use the SECTION pull-down menu on the right to choose your class and choose REPORTS
3. Drag your CLASS FOLDER from the left into the yellow box to analyze your entire class, use the dropdown next to your class folder to drill down by student
4. Choose VIEW SUMMARY REPORT, click OK
 - a. all the defaults are fine
 - b. click ok
 - c. note the 6 strands are reported by class average
 - d. Use the dropdown arrow to the left of the strand to show the substrands
 - e. Click on the magnifying glass in front of the goals under the substrands
 - f. Select students who need differentiation
 - g. Click on ASSIGN ACTIVITIES on the bottom left
 - h. Click OK
 - i. Use the magnifying glass to view activity or Assign Selected Students to later view by the student via reports
 - j. The Teacher Page will guide you through an intervention, practice and a check for understanding
 - k. Print activites as needed

*** Activities (Excellent resource for finding differentiated resources by strand and substrand)**

From inside the Assessment Differentiation System use the SECTION pull-down menu on the right to choose ACTIVITIES

1. From the left drop-down menu choose EVERYDAY MATH GRADE LEVEL GOALS
2. Choose your grade level
3. The six strands of EM will appear
4. Choose a substrand and click on an activity (activities are marked from easiest to hardest). These activities are not included in your TE kit.

*** Test Generator for Pre-made Tests**

1. From inside the Assessment Differentiation System, click on the drop down menu from the top right and choose TEST GENERATOR
2. Open your grade level-English-Progress Checks-Pick an assessment and drag into yellow area
 - a. There is no difference in difficulty between forms ABCD or E
3. Change the VIEW (top right) to ALL QUESTIONS
4. Click on the blue and white i (question option display) and UNCHECK SHOW ANSWERS
 - a. There is no line drawn between parts A and B
 - b. You can re-order and delete questions